

# HJT1

ELEMENTARY & MIDDLE SCHOOL DISTRICT

## REFERENDUM INFORMATION



### WHAT DO I NEED TO KNOW?

After several months of assessing needs and exploring options, followed by a summer of community information sessions, the School District of Hartford Joint #1 Board of Education unanimously approved a referendum question for the November 5, 2024, ballot.

The Board of Education is asking community members to vote on the issuance of up to \$8.2 million in general obligation bonds for a **comprehensive school facility improvement plan** at our Lincoln and Rossman Elementary Schools and Central Middle School for PreK-8 students in our community.

Thanks to the District's careful financial planning, this investment in district-wide capital maintenance can be made **without increasing the annual tax burden for debt repayment**. By utilizing the District's Fund 46 savings, the Board of Education has committed to **contributing more than 46%** of the total project cost.

This investment prioritizes the needs of our PreK-8th grade students and ensures the proper maintenance of our District's school facilities.



### REFERENDUM INFORMATION NIGHTS

We invite you to attend a Referendum Information Night presentation.

Understand the needs and proposed solutions, learn the facts, and get your questions answered.

- Monday, **SEPTEMBER 30**
- Wednesday, **OCTOBER 9**
- Thursday, **OCTOBER 24**
- Thursday, **OCTOBER 31**

All meetings will be held at 6:00 PM at the School District of Hartford Joint #1 District Administration Building (402 W. Sumner Street, Hartford, WI).

For additional opportunities to learn about the referendum, please visit our website or schedule a tour with District staff by emailing [referendum@hjt1.org](mailto:referendum@hjt1.org).

*Vote November 5*

### WHAT ARE THE DISTRICT'S NEEDS?



The District's capital maintenance needs include improving site drainage at multiple buildings, remodeling building infrastructure, upgrading systems, and adding generators.



All three school buildings have Americans with Disabilities Act (ADA) challenges that should be addressed to provide accessibility for all who use or visit our buildings.



At Lincoln Elementary, a portion of the 1965 exterior wall section is beyond preventative maintenance repairs and now requires rebuilding.



The plan includes renovating selected spaces at Lincoln Elementary to better accommodate Special Education, Art, Music, and Physical Education, as well as providing a designated location for the Boys & Girls Club.



### WHAT IS THE TAX IMPACT?

The referendum can be approved **without increasing the annual tax burden for debt repayment**. This is because the District paid off previous building debt early, and the Board of Education approved the use of the District's Fund 46 to cover more than 46% of the total project cost, reducing the financial burden on taxpayers.

Given the District's history of fiscal responsibility and the urgent facility maintenance needs, the Board of Education believes this is a good time to move forward with the proposed referendum projects.



For more details on the financial outlook and project funding, please visit the District website by scanning the QR code.

**46%**

OF PROJECT COST  
CONTRIBUTED FROM  
DISTRICT'S FUND 46

### PROJECT FUNDING

Referendum Amount	\$8,200,000
+ HJT1 Fund 46 Contribution	\$7,150,757
= Total Project Cost	\$15,350,757



### FOR MORE INFORMATION

# REFERENDUM INFORMATION

## SITE PLANS

Plans are conceptual at this time. The final designs will be informed by stakeholder input, contingent upon the success of the referendum.

### CENTRAL MIDDLE SCHOOL

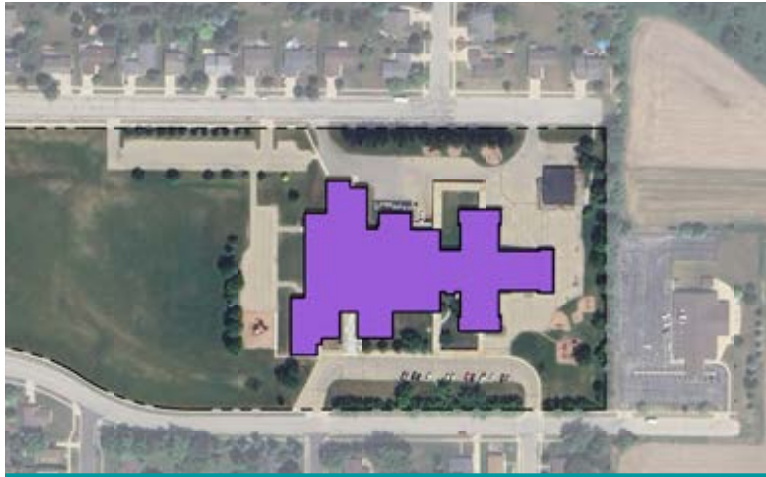
MAINTENANCE ADDITION



### LINCOLN ELEMENTARY SCHOOL



### ROSSMAN ELEMENTARY SCHOOL



## WHAT'S INCLUDED IN THE SOLUTION?

The November referendum will ask voters to authorize the issuance of up to \$8.2 million in general obligation bonds for a comprehensive school facility improvement plan that will:

- Address district-wide capital maintenance needs at Lincoln Elementary, Rossman Elementary, and Central Middle School to impact every PreK-8 student.
- Renovate selected spaces at Lincoln Elementary to better accommodate Special Education, Art, Music, Physical Education, the Boys & Girls Club, and to accommodate Americans with Disabilities Act (ADA) needs.
- Make updates to accommodate ADA needs at Central Middle School and Rossman Elementary School.
- Improve site drainage at all buildings.
- Remodel building infrastructure and systems improvements.
- Install generators at each school to continue to serve as Red Cross emergency sites for the community.

Each of these improvements will help maintain the quality of the buildings in our PreK-8th grade District. This referendum plan can be implemented without increasing the annual tax burden for debt repayment.

**HJT1**  
ELEMENTARY & MIDDLE SCHOOL DISTRICT  
**REFERENDUM**  
*Vote November 5*



## REFERENDUM INFORMATION



### WHAT'S ON THE BALLOT?

The official ballot language will appear as shown below. Remember to flip your ballot.  
**This question will be on the back!**

Shall the School District of Hartford Joint No. 1, City of Hartford, Towns of Addison, Ashippun, Erin, Hartford, and Rubicon, Washington and Dodge Counties, Wisconsin be authorized to issue pursuant to Chapter 67 of the Wisconsin Statutes, general obligation bonds in an amount not to exceed \$8,200,000 for the public purpose of paying the cost of a school facility improvement project consisting of: capital maintenance at Rossman Elementary School, Lincoln Elementary School and Central Middle School, including remodeling, building infrastructure and systems improvements; construction of a kitchen and related storage addition at Lincoln Elementary School; and acquisition of furnishings, fixtures and equipment?

☐ Yes

☐ No



### DID YOU KNOW...?

There are TWO school districts in the city of Hartford!

The School District of Hartford Joint #1 (HJT1) is a separate district from Hartford Union High School (HUHS).

This district, HJT1, educates early childhood (Pre-K) through 8th grade students at Lincoln and Rossman Elementary Schools, and Central Middle School, while HUHS educates 9th through 12th grade students.

Both districts have referendum questions on the November 5th ballot.

