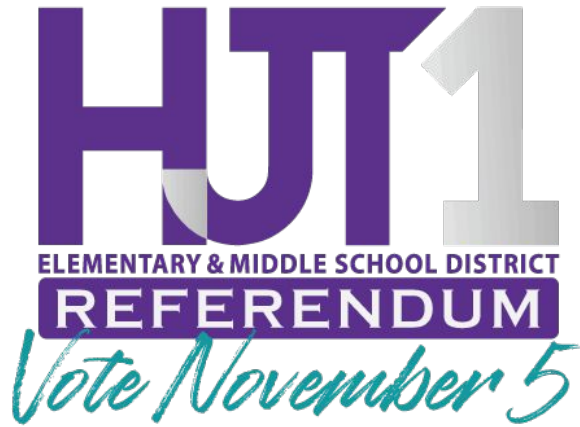


# Referendum Information

Vote November 5, 2024!



# Agenda

Background

The Needs

The Solution

The Investment

Next Steps

Q & A - 30 minutes

# Your Team



Devin Kack  
Partner + Architect



Melissa Thompson, Ph.D.  
Director of Education  
Strategy



Timothy Villwock  
Project Specialist



Andre Lorenzen  
Customer Executive |  
Sr. Vice President,  
Milwaukee Office



Megan Prestebak  
Vice President,  
Education



Brigitte Joyce  
Communications  
Specialist, Education



CREATING EXCELLENCE  
IN EDUCATION



Mike Clark  
Managing Director,  
Baird

# Our District

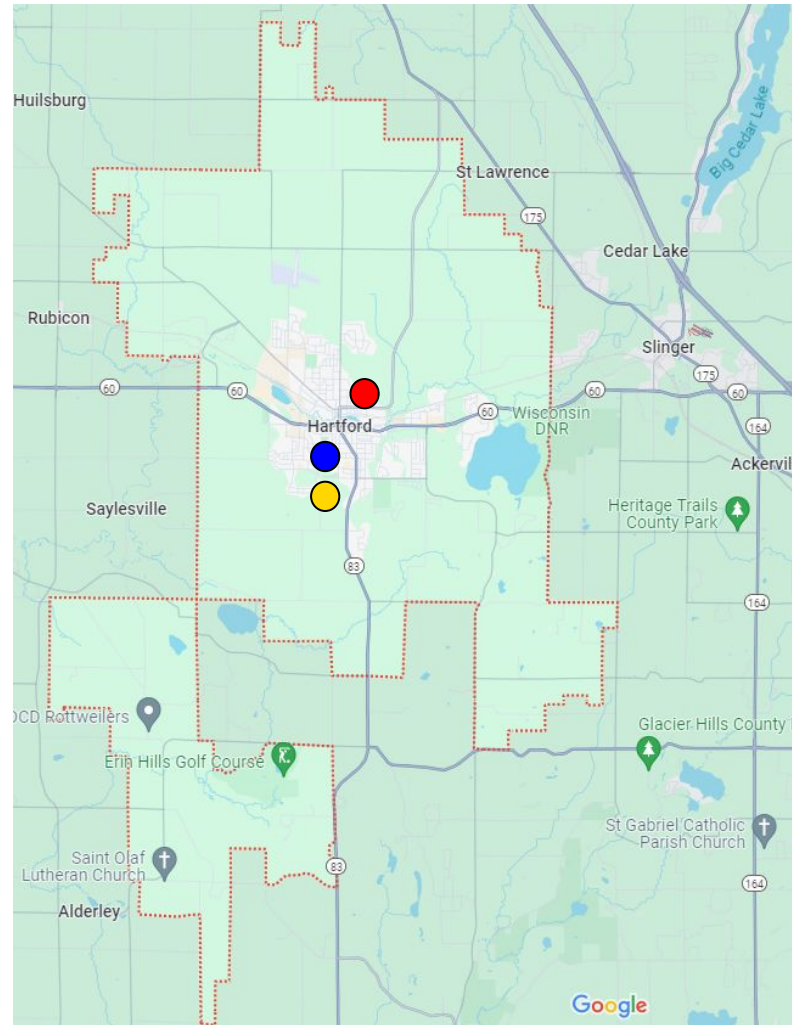
1,517 students

4K-8th grade

3 buildings

122 full-time staff

- Central MS
- Lincoln ES
- Rossman ES



District Municipalities:  
City of Hartford

Towns of Addison,  
Ashippun, Erin,  
Hartford, Richfield,  
Rubicon

Counties of  
Washington and  
Dodge



# Did You Know...

...there are **TWO** school districts in the city of Hartford?!

Both Districts  
have Referendum  
Questions on the  
Nov. 2024 ballot!

The School District of Hartford Jt. #1 (HJT1) is a separate district from Hartford Union High School (HUHS). This district, HJT1, educates early childhood (Pre-K) through 8th grade students, and HUHS educates 9th through 12th grade students.

## School District of Hartford Joint No. 1

Educates EC - Grade 8



Referendum Question:  
\$8.2 million



## Hartford Union High School

Educates Grades 9 - 12



Referendum Question:  
\$25.8 million



# Central Middle School



- 74% of students involved in clubs
- Each of our Math Teams took first place in 2024!
- 54% of students took Tech Ed/Woods courses
- 71% of students involved in Band, Orchestra, or Choir
- Opportunities to earn HUHS credit while in middle school
- 361 more books were checked out from the library in September 2024 than in September of 2023



# Lincoln Elementary School



- Percentage of Proficient or Advanced math students has increased by 17% in 2 years
- EL students have opportunities through Casa Guadalupe twice a week
- 83% of teachers have advanced degrees
- Implementation of intentional early literacy phonics programs





# Rossman Elementary School



- Math achievement & growth were each more than 20 points higher than the state average
- EL students have opportunities through Casa Guadalupe twice a week
- Opportunities to take a middle school math course, while in elementary school
- Community Engagement/ Outreach opportunities for families

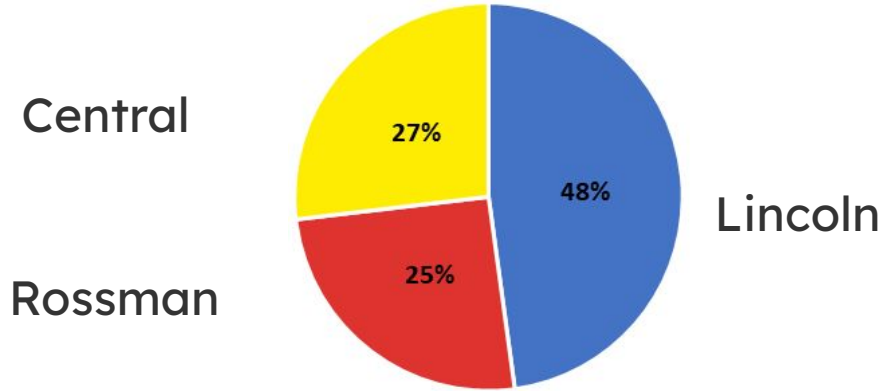


# Future Facility Planning Guiding Principles

- Continue to Make **School Safety** a Priority
- Be Responsive to Making Decisions that are **Student Centered**
- Promote **Fiscal Responsibility**

# The Needs

# Maintenance List Summary



No.	School	ADA Level 1	ADA Level 2	Level 1	Level 2	Level 3	Total Cost
1	Lincoln Elementary School	\$578,600	\$0	\$4,397,818	\$2,203,100	\$1,502,000	\$8,681,518
2	Rossman Elementary School	\$203,250	\$446,500	\$800,000	\$1,029,900	\$2,040,000	\$4,519,650
3	Central Middle School	\$690,000	\$466,500	\$1,025,000	\$1,531,500	\$1,160,950	\$4,873,950
DISTRICT-WIDE MAINTENANCE TOTAL		\$1,471,850	\$913,000	\$6,222,818	\$4,764,500	\$4,702,950	\$18,075,118

# Central Middle School



- Building-wide capital maintenance
- Americans with Disabilities Act (ADA) compliance updates
- Improvement to site drainage
- Building infrastructure & systems improvements
- Installation of generator for school buildings to continue to serve as Red Cross emergency site for community





# Lincoln Elementary School

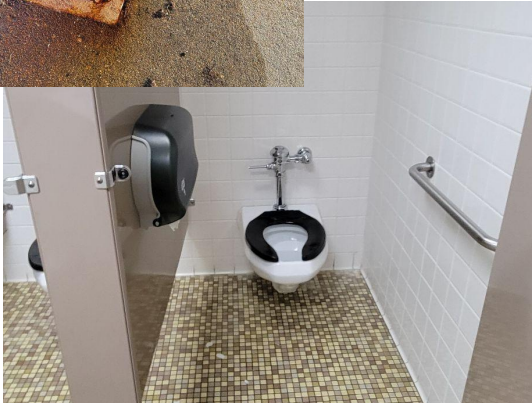


- Building-wide capital maintenance
- Renovation for Special Education, Art, Music, Physical Education, Boys & Girls Club
- Americans with Disabilities Act (ADA) compliance updates
- Improvement to site drainage
- Building infrastructure & systems improvements
- Installation of generator for school buildings to continue to serve as Red Cross emergency site for community

# Rossman Elementary School



- Building-wide capital maintenance
- Americans with Disabilities Act (ADA) compliance updates
- Improvement to site drainage
- Building infrastructure & systems improvements
- Installation of generator for school buildings to continue to serve as Red Cross emergency site for community



# The Solution

## November 2024 Referendum Funding Sources

Fund 46 Contribution  
46.6%

**\$7,150,757.00**

**\$8,200,000.00**

Referendum Debt  
53.4%

**OVER 46% of  
the total project  
cost**

Board of Education has  
committed to contributing  
from the District's Fund 46  
savings funding

# Lincoln ES - Maintenance & Improved Building



1. Address maintenance categories ADA 1 & non-ADA 1
2. Dedicated and appropriately sized Special Education spaces for each grade level
3. Re-purpose and ADA compliant
  - a. Underutilized locker rooms for Art/Music
  - b. Current Art for gym offices/storage
4. Staff support to better assist students (Conf, EL & Dean of Student Office)
5. Remediates exterior brick, all areas of need
6. Locate Boys & Girls Club near east entrance
7. Cafeteria storage/receiving needs
8. Site drainage remediation (northeast & south)
  - a. Address water draining/ponding against existing building/tunnels (northeast)
  - b. Address drainage and water intrusion into the 4th/5th grade wing (south)



LEGEND

- ADDITION
- MAINTENANCE



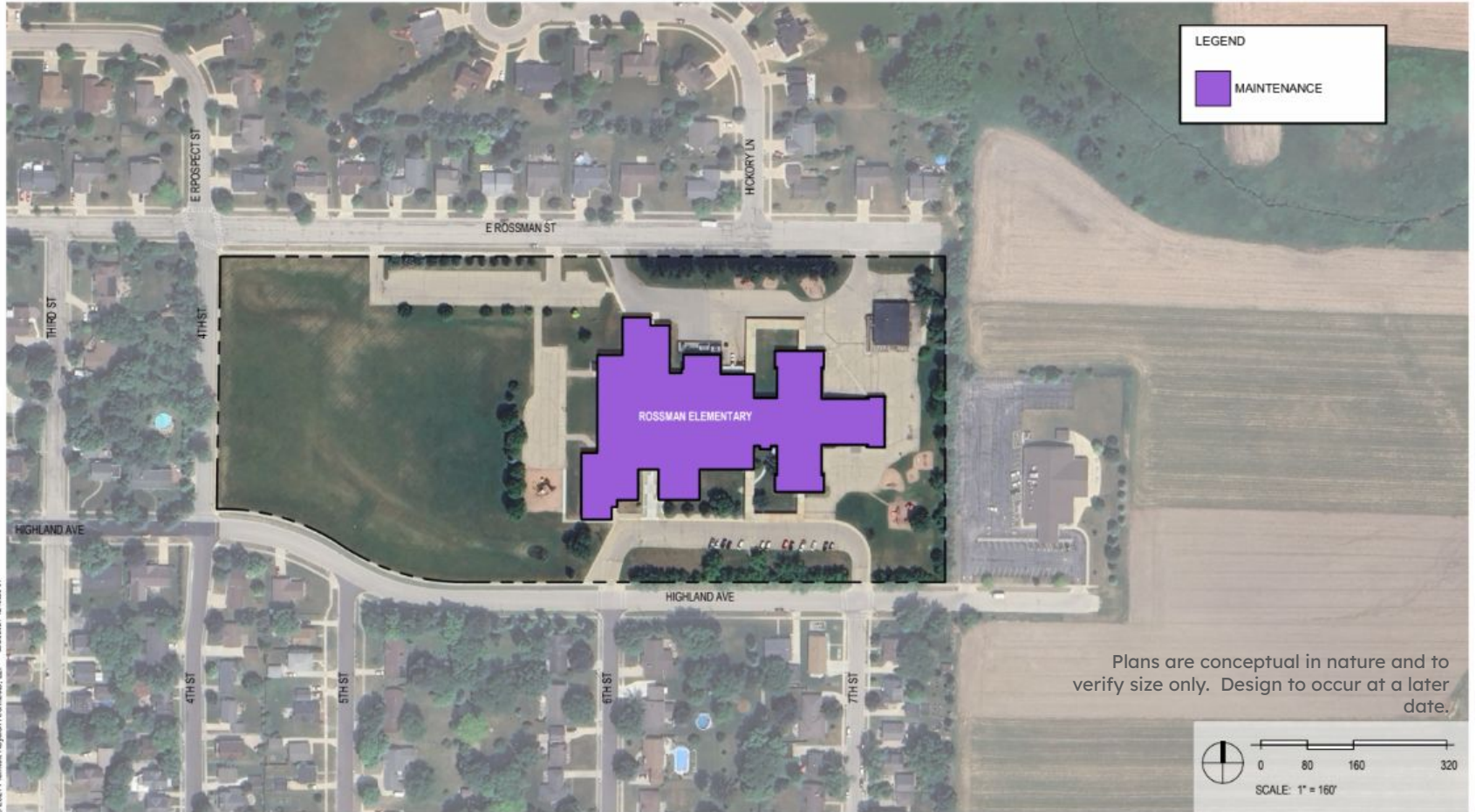
Plans are conceptual in nature and to verify size only. Design to occur at a later date.

## Rossman ES - Maintenance

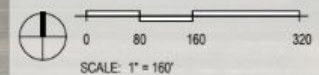


1. ADA
  - a. Provide accessible door hardware and door entries
  - b. Provide compliant handrails at stairs and ramps
  - c. Provide accessible stalls with required clearances and grab bars
  - d. Install accessible height pass through window counter
  
2. Maintenance
  - a. Remove exterior canopies
  - b. Patch gutters and roof drainage
  - c. Replace generator
  - d. Replace combustible wall construction





Plans are conceptual in nature and to  
verify size only. Design to occur at a later  
date.





# Central MS - Maintenance & Entry



## 1. ADA

- a. Provide accessible stalls with required clearances and grab bars
- b. Provide compliant door hardware and doors
- c. Address height of pass through window counters

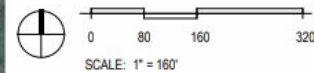
## 2. Maintenance

- a. Address grading and drainage at entrance canopy and East/West roof edges
- b. Provide new natural gas generator



LEGEND

 MAINTENANCE



Plans are conceptual in nature and to verify size only. Design to occur at a later date.

# 0%

If the referendum is approved, there would be **NO INCREASE** to the annual tax burden for debt repayment on the school tax mill rate.

# What's On the Ballot?

The November referendum will ask voters to authorize the issuance of up to \$8.2 million in general obligation bonds for a **comprehensive** school facility improvement plan that will:

- Address District-wide capital maintenance needs at Lincoln Elementary, Rossman Elementary, and Central Middle School to impact every PreK-8 student.
- Renovate selected spaces at Lincoln Elementary to better accommodate Special Education, Art, Music, Physical Education, Boys & Girls Club, and to accommodate Americans with Disabilities Act (ADA) needs.
- Make updates to accommodate ADA needs at Central Middle School and Rossman Elementary School.
- Improve site drainage at multiple buildings.
- Remodel building infrastructure and systems improvements

# Ballot Language

*Shall the School District of Hartford Joint No. 1, City of Hartford, Towns of Addison, Ashippun, Erin, Hartford, and Rubicon, Washington and Dodge Counties, Wisconsin be authorized to issue pursuant to Chapter 67 of the Wisconsin Statutes, general obligation bonds in an amount not to exceed \$8,200,000 for the public purpose of paying the cost of a school facility improvement project consisting of: capital maintenance at Rossman Elementary School, Lincoln Elementary School and Central Middle School, including remodeling, building infrastructure and systems improvements; construction of a kitchen and related storage addition at Lincoln Elementary School; and acquisition of furnishings, fixtures and equipment?*

Referendum	Referendum (cont.)
<p>To vote in favor of a question, fill in the oval next to "Yes," like this: <input type="radio"/></p> <p>To vote against a question, fill in the oval next to "No," like this: <input type="radio"/></p>	<p><b>School District</b></p> <p>Shall the School District of Hartford Joint No. 1, City of Hartford, Towns of Addison, Ashippun, Erin, Hartford and Rubicon, Washington and Dodge Counties, Wisconsin be authorized to issue pursuant to Chapter 67 of the Wisconsin Statutes, general obligation bonds in an amount not to exceed \$8,200,000 for the public purpose of paying the cost of a school facility improvement project consisting of: capital maintenance at Rossman Elementary School, Lincoln Elementary School and Central Middle School, including remodeling, building infrastructure and systems improvements; construction of a kitchen and related storage addition at Lincoln Elementary School; and acquisition of furnishings, fixtures and equipment?</p> <p><input type="radio"/> Yes</p> <p><input type="radio"/> No</p>
<p><b>State</b></p> <p><i>"Eligibility to vote. Shall section 1 of article III of the constitution, which deals with suffrage, be amended to provide that only a United States citizen age 18 or older who resides in an election district may vote in an election for national, state, or local office or at a statewide or local referendum?"</i></p> <p><input type="radio"/> Yes</p> <p><input type="radio"/> No</p>	<p>Shall the Hartford Union High School District, Washington and Dodge Counties, Wisconsin be authorized to issue pursuant to Chapter 67 of the Wisconsin Statutes, general obligation bonds in an amount not to exceed \$25,800,000 for the public purpose of paying the cost of a school building and facility improvement project consisting of: renovations, building infrastructure (including pool updates), safety, security and accessibility improvements; construction of an addition for technical education space; outdoor physical education and athletic facility improvements, including to replace the track and to install a turf field; site improvements; and acquisition of furnishings, fixtures and equipment?</p> <p><input type="radio"/> Yes</p> <p><input type="radio"/> No</p>

Flip your  
Ballot!  
Referendum  
Question is  
on the back!



# Next Steps

# Voting Information

Visit [myvote.wi.gov](https://myvote.wi.gov) to:

- Find your polling place
- Register to vote
- Request an absentee ballot
- Gather information about early, in-person voting
- Find your local municipal clerk... and more!



Early, In-Person Voting begins October 22, 2024.



# Key Takeaways

## 1. What is on the ballot on November 5, 2024?

A **comprehensive** school facility improvement plan that will:

- Address District-wide capital maintenance needs at Lincoln Elementary, Rossman Elementary, and Central Middle School to impact every PreK-8 student.
- Renovate selected spaces at Lincoln Elementary to better accommodate Special Education, Art, Music, Physical Education, Boys & Girls Club, and to accommodate Americans with Disabilities Act (ADA) needs.
- Make updates to accommodate ADA needs at Central Middle School and Rossman Elementary School.
- Improve site drainage at multiple buildings.
- Remodel building infrastructure and systems improvements

## 2. School District of Hartford Joint No. 1 is your Elementary & Middle School District in Hartford.

## 3. If approved, this investment in district-wide capital maintenance can be made **without increasing the annual tax burden for debt repayment.**

# Get More Information

- **Referendum Information Sessions:**
  - ~~Monday, September 30th~~
  - ~~Wednesday, October 9th~~
  - Thursday, October 24th
  - Thursday, October 31st
    - All Sessions will be held at 6 PM at the HJT1 District Office
- **Board of Education Meetings**
- **Hartford Harvest the Arts Festival**
  - ~~October 12 from 10 AM – 4 PM~~
- **Watch Your Mailbox!**
- **Encourage friends, neighbors, colleagues to attend!**



# District Contact Information

Visit the Website: [www.hjt1.org/referendum](http://www.hjt1.org/referendum)

Call: 262-673-3155

Email: [referendum@hjt1.org](mailto:referendum@hjt1.org)

Check our Facebook: @HartfordJt1





**SCHEDULE A TOUR**  
of any District Buildings  
Or, have us come to you!

Thank you!